

# Quadrant™ Express

## The Power of GPS Fleet Management for Less

- Increase mobile workforce productivity
- Lower operating costs
- Improved safety and security of mobile workers
- Secure and regular export of all fleet location data
- Comprehensive user-friendly report suite
- Automatic notification of virtual boundary crossings
- 5-minute standard location reporting with "Poll-on-demand" for anytime record requests

WebTech Wireless™ develops, manufactures and delivers proven GPS vehicle tracking and Telematics solutions to large and small scale commercial fleets and consumer vehicles around the world. Our suite of applications integrates GPS, wireless communications technologies and the Internet to provide real-time information about the location and status of vehicles and mobile resources. With 8 million records transferred daily, WebTech Wireless' execution of innovative vehicle tracking and Telematics solutions is unrivalled.

## Quadrant Express Map

### Your mobile workforce in real time

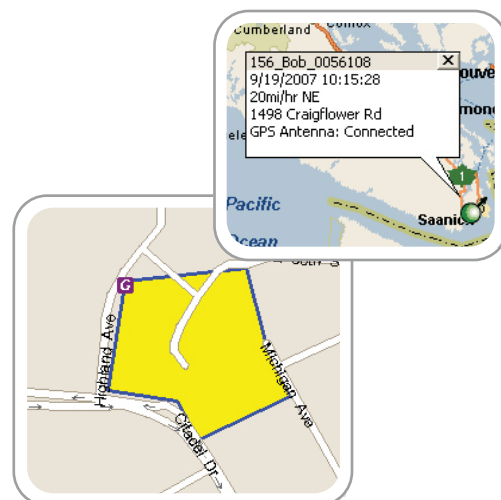
Color-coded vehicles show real time, detailed activity and location information on a powerful yet easy to use map. Viewing details such as speed, direction, heading, and driver for one or multiple vehicles in your fleet is as simple as a click of a mouse.

### Automatic notifications keep you informed

Whether in the office or on the road, receive immediate notification to email, phone or PDA when vehicles arrive at your head office, customer locations or any address you choose.

### Find the Nearest Vehicle in a Flash

Pin-point a location and quickly identify the closest vehicles from your entire fleet, providing detailed instructions and a driving time estimate.



## Quadrant Express WT5000L Locator

### Trusted, reliable hardware

Quadrant Express offers simple, low-cost installation. Each WT5000L Locator is pre-configured for straightforward activation with your local carrier. Start enjoying the benefits of automated Fleet Management today.



*Quadrant Express provides all the benefits of WebTech Wireless' global experience in a simple yet powerful package. Just install and go!*

## Quadrant Express Reports

### Manage your mobile assets with ease

Analyze fleet activity, performance and efficiency with ease. Quadrant Express Reports are color-coded, user-friendly and highly configurable, meeting all your information collection, analysis and storage needs.

### Scheduled data export

Schedule a seamless and regular export of your fleet's vehicle records for use in third-party systems and for extra protection of your valuable data.

### Activity Report

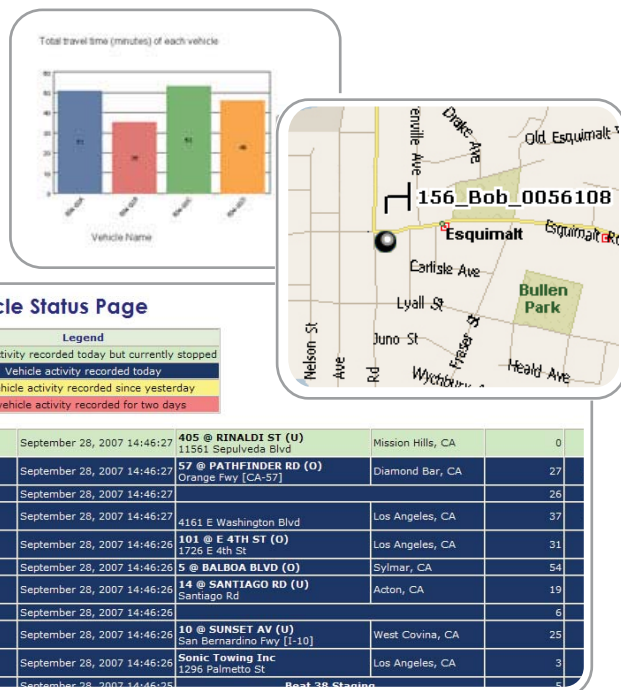
Every start, stop, location and change in vehicle status is displayed with time, date and connection details, making route verification and assessment of driving performance fast and easy.

### Vehicle Status Report

The Vehicle Status Report's color-coded list of all vehicles provides a "snap-shot" of every vehicles' location and status. Each vehicle links to a map view, for an instant visual reference of vehicle locations.

### Travel and Stop Reports

The intelligent structuring of the Travel Report allows you to view a stop location, duration of the stop, and the total distance and time required to reach the next destination, making it easy to pin-point time spent at a customer location for efficient route planning and billing.



## Ordering Information

### Hardware for your vehicle

Hardware for your vehicle	Part No.	Required
WebTech 5000L Locator with standard antennas (NA)	01-00-0015-00.0 (NA)	Required
WebTech 5000L Locator with standard antennas (EU)	01-01-0015-00.0 (EU)	
Internal Battery for tamper detect and notification (NA)	70-10-0018-00.0 (NA)	Recommended
Internal Battery for tamper detect and notification (EU)	70-10-0020-00.0 (EU)	
Installation of WebTech WT5000L Locator	Quote required	Recommended

### Quadrant Express vehicle tracking and reporting

Activation of Quadrant Express Portal (one-time fee)	Google map	05-01-0032-00.0	Required
	MapPoint map	05-01-0031-00.0	Optional
Quadrant Express 5-minute-update - monthly fee (not including wireless data plan)		06-01-0010-00.0	Required

### MapPoint software for your managers

Microsoft MapPoint 2006 (NA) for Administrators*	04-01-0008-00.0	Optional
Microsoft MapPoint 2006 (Europe) for Administrators*	04-01-0009-00.0	Optional

\*Includes a Google Map account with purchase

### Data Plan

A monthly data plan must be purchased separately from a wireless carrier	N/A	Required
A 1MB plan is recommended		



WebTech Wireless Inc.  
215 - 4299 Canada Way  
Burnaby, BC, Canada, V5G 1H3  
Tel: +(1) 604.434.7337  
Fax: +(1) 604.434.5270  
info@webtechwireless.com  
www.webtechwireless.com

WebTech Wireless United Kingdom  
Wyvols Court  
Old Basingstoke Road,  
Swallowfield, Reading, Berkshire  
United Kingdom  
RG71WY  
Tel: +44 118 988 0233  
Fax: +44 118 988 0333